

# EASY ALARM

Pluggable alarm module

tcontrol

user manual

Power reserve

Dry contact N.O.

Direct connection

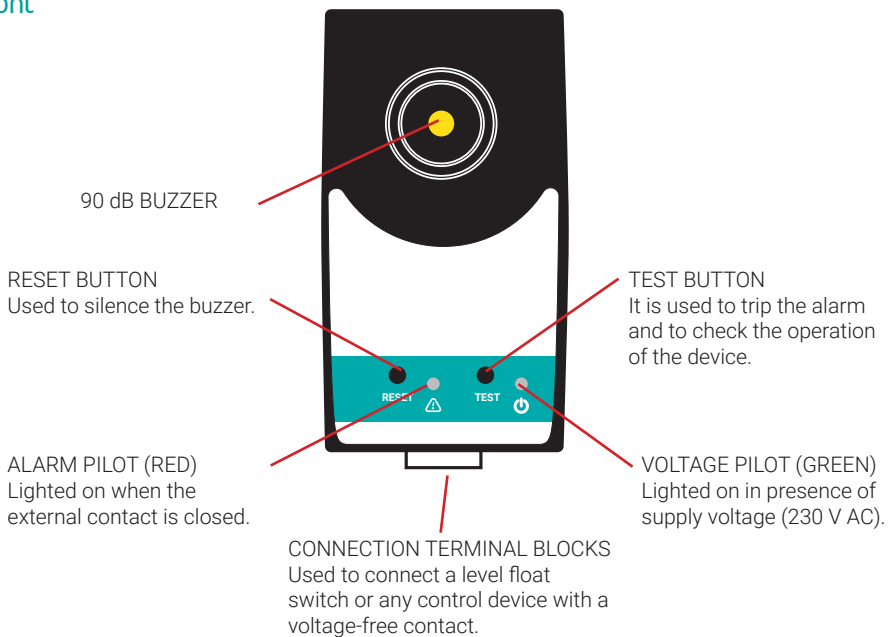
## Description

Acoustic and visual alarm module with power reserve (rechargeable battery) for connection of a control device with voltage-free contact (float switch, probes, pressure switch, door switch, etc.).

- IP40 plastic housing.
- 230 V AC power supply.
- Rechargeable battery, with 6-months autonomy (15 hours in alarm mode).
- Voltage and alarm pilot lights.
- 90 dB buzzer.
- Test button.
- Reset button (silences the alarm).
- Terminal block for a voltage-free external contact.



## Front

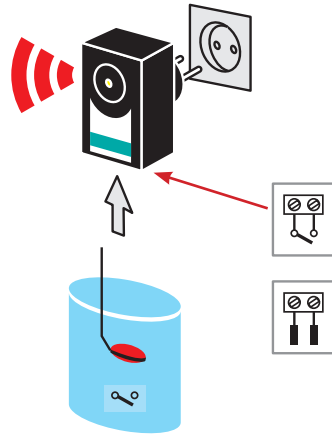


## Start-up

Connect the 2 wires of the level float switch or any control device with voltage-free contact to the connection terminal of the equipment.

Plug the equipment into a 230 V AC outlet. The voltage pilot lights on. The equipment is ready for operation.

Note: It is possible to replace the built-in 9V rechargeable battery inside the unit.



## Battery life

When the mains supply fails, the unit continues to run on the energy stored in the battery. In this case, the voltage pilot (green) remains off to extend the battery life.

Autonomy without mains supply (alarm not activated): 6 months.

Autonomy with alarm activated: 15 hours.

## Specifications



Power supply	230 V AC - 50/60 Hz
Maximum consumption	1.8 VA
Battery	Type 9V rechargeable
External contact voltage	9...12 V DC
Buzzer	12 V DC, 90 dB at 1 meter
Max. terminal cross-section	2x2.5 mm <sup>2</sup>
Temperature range	-10...+55 °C
Protection degree	IP40
Dimensions (AxBxC)	62x123x75 mm
Net weight	245 g

